



ISLAND ORBIT

Modular Infrastructure & Resilient Development

Strategy

Briefing for the Head of Physical Development,

JUNE 2026

Grenada

EXECUTIVE VISION

REVOLUTIONIZING CARIBBEAN BUILT ENVIRONMENTS

Island Orbit provides weather-hardened, high-performance modular infrastructure specifically engineered for the unique environmental and regulatory demands of Grenada.

- ✓ Zero-Impact Foundation Engineering
- ✓ Category 5 Hurricane Resilience
- ✓ Off-Grid Self-Sufficiency Protocols
- ✓ Rapid Deployment Capability

THE STRATEGIC GOAL

To partner with Physical Development to establish a new gold standard for sustainable, rapid-growth infrastructure that respects Grenadian land-use laws and environmental sensitivity.

D-SERIES: LUXURY MODULAR

THE "SHOWROOM" STANDARD

Architecturally designed for tourism and high-end residential applications. Features aerospace-grade materials and expansive glass integrated with structural steel framing.

- ✓ Modern Aesthetic Integration
- ✓ Premium Interior Finishes
- ✓ Integrated Smart-Home Systems
- ✓ Adaptive Floor Plans (1-3 Units)



A7 SERIES: INFRASTRUCTURE



UTILITY & RAPID DEPLOYMENT

Engineered for government contracts, worker housing, and hurricane relief. The A7 prioritizes durability and volume without sacrificing human comfort.

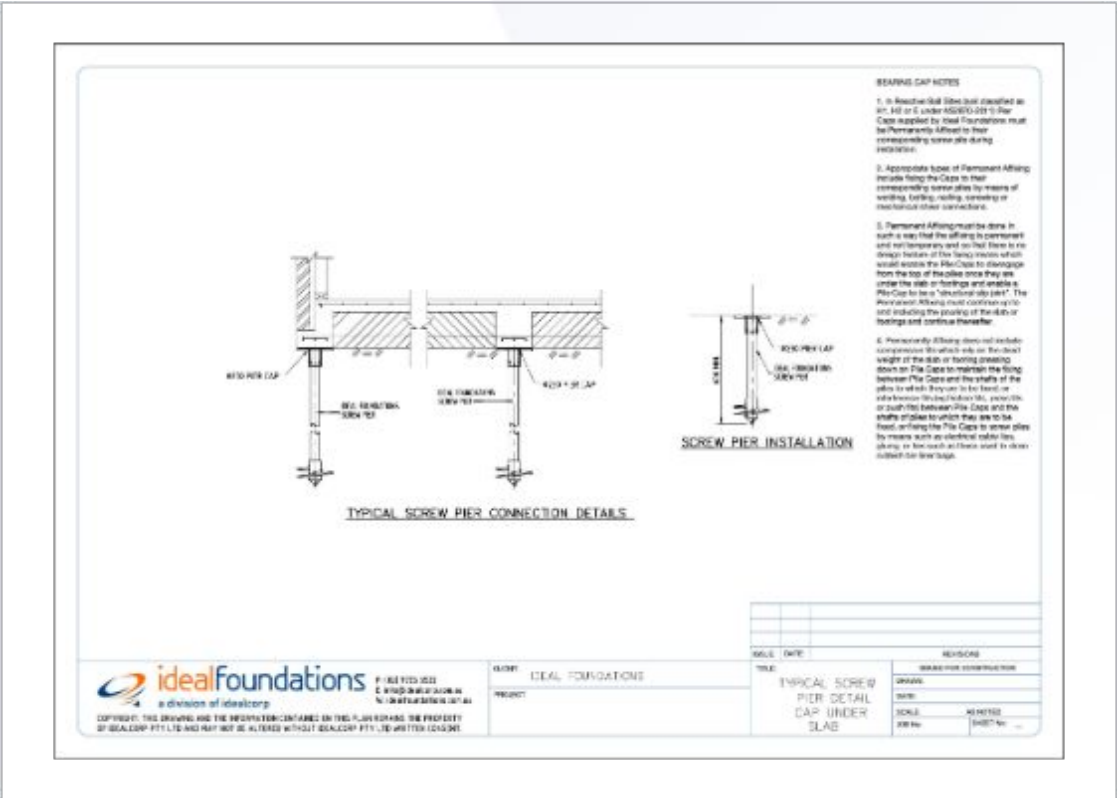
- ✓ High-Volume Scalability
- ✓ Multi-Purpose Utility (Clinic, Office, Home)
- ✓ Superior Thermal Insulation
- ✓ Corrosion Resistant Frame (C5-M)

FOUNDATION & FOOTING

8-PIER LASER-ALIGNED ENGINEERING

Our unique footing system eliminates the need for massive concrete slabs, reducing environmental land disruption by 90%.

- ✓ **Mechanical Anchoring:** Steel piers driven to refusal or laser-aligned concrete pads.
- ✓ **Erosion Prevention:** Elevated structure allows natural water runoff and air-flow.
- ✓ **Precision:** Laser-leveling ensures structural alignment regardless of terrain.



LOGISTICS & INSTALLATION

"CARRYING IN PLACE" PROTOCOL

Our logistical chain is designed for precision deployment on sensitive or hard-to-reach Grenadian slopes.

- ✓ **Crane Deployment:** High-precision lifting for exact placement on the 8-pier system.
- ✓ **Reduced On-Site Labor:** 90% of construction completed off-site.
- ✓ **Minimized Disruption:** Immediate "turn-key" readiness after setting.



RESILIENCE & INTEGRITY



WIND RATING

Engineered to withstand sustained winds of 180 MPH (Category 5+).



C5-M COATING

Marine-grade protective coating for maximum corrosion resistance in coastal air.



316 STAINLESS

All hardware and fasteners utilize Grade 316 stainless steel for structural longevity.

Structural Certification: All modules undergo rigorous third-party pre-shipment inspections to ensure compliance with international building codes adapted for Caribbean climates.

REGULATORY FRAMEWORK

PHYSICAL PLANNING & DEVELOPMENT CONTROL ACT

Island Orbit projects are designed to align seamlessly with the Physical Planning and Development Control Act (Act 23 of 2016).

Regulatory Requirement	Island Orbit Solution
Site Density & Coverage	Minimal footprint pier system maximizes pervious surface area.
Environmental Protection	No heavy earthworks required; zero groundwater contamination septic units.
Structural Safety	Wind-tunnel tested modules exceeding regional hurricane codes.
Site Readiness	Pre-delivery "Site Readiness Certification" protocols.

SUSTAINABILITY GOALS

ZERO
CONCRETE SLAB RELIANCE



- ✓ **Energy Independence:** Integrated solar arrays and Lithium-Ion battery storage (GRENLEC secondary).
- ✓ **Water Management:** Advanced filtration for greywater and blackwater recycling.
- ✓ **Low Carbon Footprint:** Modular delivery reduces site-visit vehicle emissions by over 70%.
- ✓ **Bespoke Septic:** Multi-chamber filtration systems designed for steep Grenadian terrain.

STRATEGIC REDEVELOPMENT

PORT HIGHWAY INITIATIVE

A pilot program to replace informal structures with dignified, hurricane-resistant modular units.

- ✓ Clean Urban Planning Alignment
- ✓ Commercial & Residential Multi-use
- ✓ Rapid Multi-Unit Deployment
- ✓ Enhanced Port Corridor Aesthetics

PIPELINE IMPACT

Establishing the "Bay Gardens" showroom as a proof-of-concept for government and private stakeholders to verify material quality first-hand.

IMPLEMENTATION ROADMAP

Q2 2026

Showroom Assembly (Bay Gardens)

Q3 2026

Regulatory Certification & Pilot

Deployment

Q4 2026

Scaling to Commercial &
Government Land Projects

"Our 'Master Trainer' model ensures assembly precision on-site, using hands-on leadership to train local crews in aerospace-level assembly standards."

Q&A

Discussion on Regulatory Integration & Site-Specific Requirements

Key Discussion Points:

- Setback and Boundary Requirements for Pier Foundations
- Erosion Control during Site Preparation
- Access Logistics for Crane-Based Installation
- Integration with local Physical Planning database

IMAGE SOURCES



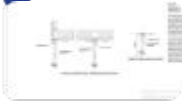
<https://cdn.floridadesign.com/wp-content/uploads/sites/137/2023/10/Nestled-on-the-tip-of-Anna-Maria-Island-this-modern-beach-residence-designed-by-architect-David-Wash-emanates-a-West-Indies-vibe.jpg>

Source: floridadesign.com



https://static.wixstatic.com/media/75aa7f_31eae29286674d1ba5cf049e0bc54559~mv2.jpg/v1/fill/w_432,h_322,al_c,q_80,usm_0.66_1.00_0.01,enc_avif,quality_auto/75aa7f_31eae29286674d1ba5cf049e0bc54559~mv2.jpg

Source: www.ticabhouse.com



<https://www.idealfoundations.com.au/wp-content/uploads/sites/2/Typ-Screw-Pier-detail-slab-on-ground-with-bearing-cap.jpeg>

Source: www.idealfoundations.com.au



<https://mantianstar.com/wp-content/uploads/2026/01/10025-1024x768.jpg>

Source: mantianstar.com